



Manager Inspection Completed

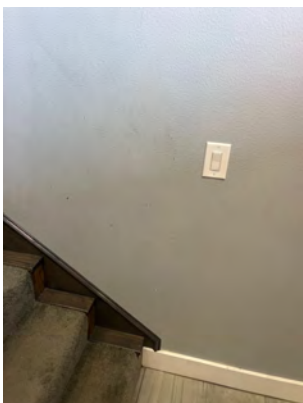
[09/06/2025, 22:19:34]: Has started Manager Inspection for 201 Dove Creek Unit 1 on the Property Lenz mobile app.

Property	Renter(s)	Date
201 Dove Creek Unit 1		09/06/2025, 22:19:34

Manager Inspection Conditions

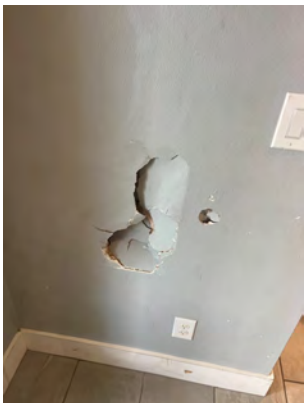
N= New (just installed or painted) S= Satisfactory / Acceptable D= Existing Damage != Needs attention
 N/A= Not Available

Entry	Condition	Comments
Ceiling & Walls	- S - - -	-
Paint & Wallpaper	- - D - -	-
Doors & Door Stops	- S - - -	-
Door Lock & Knobs	- S - - -	-
Flooring	- S - - -	-
Light Fixtures	- S - - -	-
Window & Screens	- - - - N/A	-
Window Latches	- - - - N/A	-
Plug & Switches	- S - - -	-
Closet Shelves & Rods	- S - - -	-
Others	- S - - -	-



Paint & Wallpaper

Living Room	Condition	Comments
Ceiling & Walls	--- ! -	By back door
Paint & Wallpaper	- S - - -	-
Doors & Door Stops	- S - - -	-
Door Lock & Knobs	- S - - -	-
Flooring	- S - - -	-
Light & Ceiling Fans	- S - - -	-
Window & Screens	- S - - -	-
Window Latches	- S - - -	-
Drapes/Blinds/Shutters	- S - - -	-
Plug & Switches	- S - - -	-
Cabinets	--- N/A	-
Fireplace	- - D - -	Mantle Damage
Other	- S - - -	-



Ceiling & Walls

📅 9/6/2025



Ceiling & Walls

📅 9/6/2025

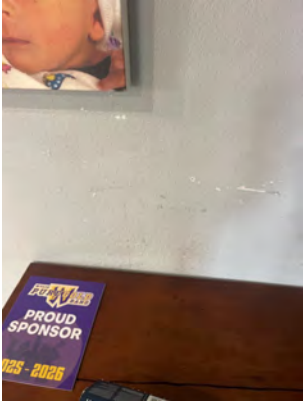


Fireplace

📅 9/6/2025

Kitchen & Breakfast	Condition	Comments
Ceiling & Walls	- S - - -	-
Paint & Wallpaper	- - D - -	-
Doors & Door Stops	- - D - -	-

Kitchen & Breakfast	Condition	Comments
Door Lock & Knobs	- S - - -	-
Flooring	- S - - -	-
Light & Ceiling Fans	- S - - -	-
Window & Screens	- S - - -	-
Window Latches	- S - - -	-
Drapes/Blinds/Shutters	- S - - -	-
Plug & Switches	- S - - -	-
Pantry & Shelves	- - D - -	Shelf overloaded
Cabinets & Handles	- S - - -	-
Drawers & Handles	- - D - -	Cabinets by cooktop
Countertops	- S - - -	-
Range/Cooktop	- S - - -	-
Microwave	- S - - -	-
Dishwasher	- S - - -	-
Oven - Racks & Knobs	- S - - -	-
Oven - Broiler & Pan	- S - - -	-
Oven - Light Cover & Bulb	- S - - -	-
Vent Hood - Light & Fan	- S - - -	-
Vent Hood - Filter	- S - - -	-
Garbage Disposer	- S - - -	-
Sink & Faucet	- S - - -	-
Refrigerator - Shelves & Drawers	- S - - -	-
Refrigerator - Light Cover & Bulb	- S - - -	-
Other	- S - - -	-



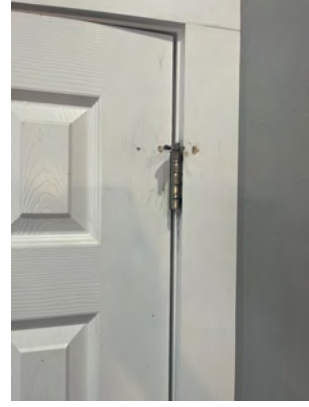
Paint & Wallpaper

📅 9/6/2025



Paint & Wallpaper

📅 9/6/2025



Doors & Door Stops

📅 9/6/2025



Pantry & Shelves

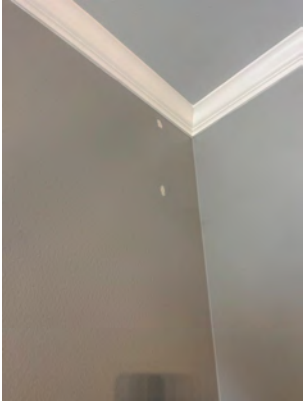
📅 9/6/2025



Drawers & Handles

📅 9/6/2025

Dining Room	Condition	Comments
Ceiling & Walls	- S - - -	-
Paint & Wallpaper	- - D - -	-
Doors & Door Stops	- - - - N/A	-
Door Lock & Knobs	- - - - N/A	-
Flooring	- S - - -	-
Light & Ceiling Fans	- S - - -	-
Window & Screens	- - D - -	Blinds missing
Window Latches	- S - - -	-
Drapes/Blinds/Shutters	- - - ! -	Missing
Plug & Switches	- S - - -	-
Cabinets	- - - - N/A	-
Other	- - - - N/A	-



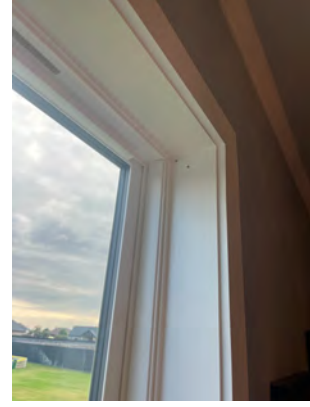
Paint & Wallpaper

📅 9/6/2025



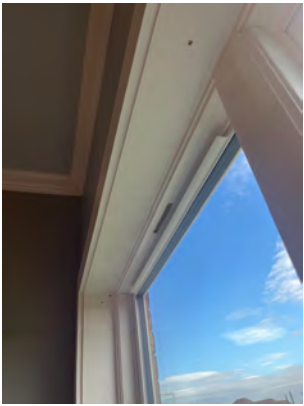
Paint & Wallpaper

📅 9/6/2025



Window & Screens

📅 9/6/2025

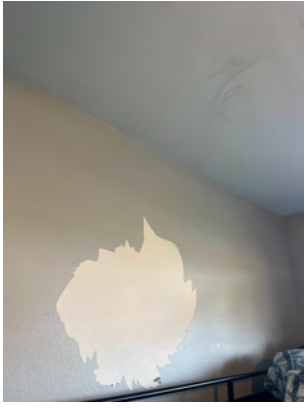


Window & Screens

📅 9/6/2025

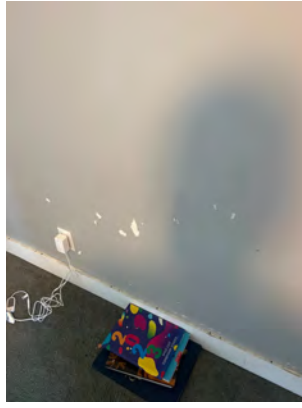
Bedroom 1: Front Left Bedroom	Condition	Comments
Ceiling & Walls	- S - - -	-
Paint & Wallpaper	- - - - ! -	-
Doors & Door Stops	- S - - -	-
Door Lock & Knobs	- S - - -	-
Flooring	- - - - ! -	Needs to be shampooed
Light & Ceiling Fans	- S - - -	-
Window & Screens	- S - - -	-
Window Latches	- S - - -	-
Drapes/Blinds/Shutters	- - - - ! -	-
Plug & Switches	- S - - -	-
Closet Shelves & Rods	- - D - -	Damage to closet walls
Cabinets	- - - - N/A	-

Bedroom 1: Front Left Bedroom	Condition	Comments
Other	----- N/A	-



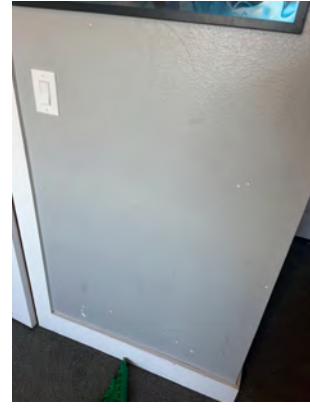
Paint & Wallpaper

📅 9/6/2025



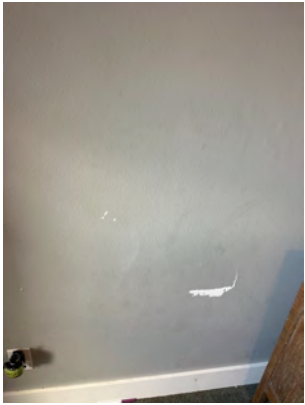
Paint & Wallpaper

📅 9/6/2025



Paint & Wallpaper

📅 9/6/2025



Paint & Wallpaper

📅 9/6/2025



Flooring

📅 9/6/2025



Drapes/Blinds/Shutters

📅 9/6/2025



Closet Shelves & Rods

📅 9/6/2025

Bedroom 2: Back Bedroom	Condition	Comments
Ceiling & Walls	- S - - -	-

Bedroom 2: Back Bedroom	Condition	Comments
Paint & Wallpaper	- S - - -	-
Doors & Door Stops	- S - - -	-
Door Lock & Knobs	- S - - -	-
Flooring	- S - - -	-
Light & Ceiling Fans	- S - - -	-
Window & Screens	- S - - -	-
Window Latches	- - - ! -	Won't latch
Drapes/Blinds/Shutters	- S - - -	-
Plug & Switches	- S - - -	-
Closet Shelves & Rods	- S - - -	-
Cabinets	- - - - N/A	-
Other	- - - - N/A	-



Window Latches

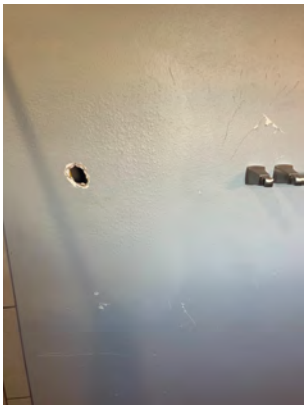
Window Latches

📅 9/6/2025

📅 9/6/2025

Bathroom 1	Condition	Comments
Ceiling & Walls	- - - ! -	Shower bar ripped hole in wall. Shower bar missing.
Paint & Wallpaper	- - D - -	-
Doors/Locks/Knobs/Stops	- S - - -	-
Flooring	- S - - -	-
Light Fixtures	- - - ! -	Light fixture damaged. New bulb not working on left side.
Window & Screens	- S - - -	-

Bathroom 1	Condition	Comments
Window Latches	- S - - -	-
Drapes/Blinds/Shutters	- S - - -	-
Plug & Switches	- S - - -	-
Closet Shelves & Rods	- - - - N/A	-
Cabinets & Handles	- S - - -	-
Countertops	- S - - -	-
Sink & Faucets	- S - - -	-
Toilet/Lid/Seat/Paper Hldr.	- S - - -	-
Heaters & Exhaust Fans	- S - - -	-
Towel Fixtures	- - - ! -	Missing
Other	- S - - -	-



Ceiling & Walls

📅 9/6/2025



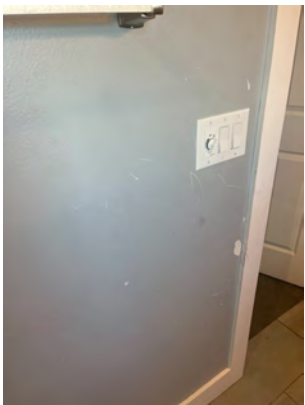
Paint & Wallpaper

📅 9/6/2025



Paint & Wallpaper

📅 9/6/2025



Paint & Wallpaper

📅 9/6/2025



Light Fixtures

📅 9/6/2025



Towel Fixtures

📅 9/6/2025

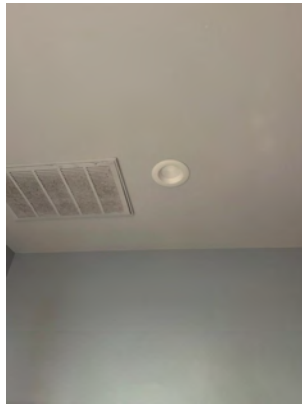
Garage	Condition	Comments
Ceilings & Walls	- S - - -	-
Floor	- S - - -	-
Auto Door Opener - Safety Reversal	- S - - -	-
Auto Door Opener - Remotes	- S - - -	-
Garage Doors	- S - - -	-
Exterior Door & Stops	- S - - -	-
Storage Room	- S - - -	-
Other	- S - - -	-

Other	Condition	Comments
Central A/C & Heat - Filter	- S - - -	-
Central A/C & Heat - Thermostat	- S - - -	-
Window A/C units	- - - - N/A	LED needs
Space or Wall Heaters	- - - - N/A	-
Water Heater	- S - - -	-
Water Softener	- - - - N/A	-
Alarm System	- - - ! -	Pulled from wall. Not working
Central Vacuum	- - - - N/A	-
Other	- - D - -	LED Needs to be replaced



Alarm System

📅 9/6/2025



Other

📅 9/6/2025

Exterior Items	Condition	Comments
Mailbox	- S - - -	-
Fences & Gates	- - - ! -	Replace several pickets
Pool/Spa & Equip	- S - - -	-
Lawn, Trees & Shrubs	- S - - -	-
Undgrd. Lawn Sprinkler	- - - ! -	Covers Damaged
Exterior Faucets	- S - - -	-
Roof & Gutters	- S - - -	-
Siding & Paint	- S - - -	-
Driveway	- S - - -	-
Front Door - Knob & Lock	- S - - -	-
Front Door - Light/Bulb	- S - - -	-
Front Door - Bell	- S - - -	-
Back Door - Knob & Lock	- S - - -	-
Back Door - Light/Bulb	- S - - -	-
Patio or Deck	- S - - -	-
Patio Door - Knob & Lock	- S - - -	-
Patio Door - Light/Bulb	- S - - -	-
Other	- S - - -	-



Fences & Gates

📅 9/6/2025



Fences & Gates

📅 9/6/2025

Optional Comment:

Agent / Inspector Signature

A handwritten signature in black ink, consisting of several overlapping, stylized loops and lines, positioned in the upper left corner of the page.